

2A PRODUCTS



LPG DISPENSER



Product Features

Nominal pipe diameter Inlet/Outlet (DN)	25 mm	
Maximum flow rate (Qmax)	50 (both types) L/Min	
Minimum flow rate (Qmin)	5 L/Min	
Minimum measured quantity	5 L	
Cyclic volume	0,5 L	
Measured liquid	LPG	
Liquid density	500 to 650 kg/m ³	
Temperature range of liquid	(-10 to 50)°C	
Temperature range of ambient	(-25 to +55)°C	
Pressure range of liquid	7 to 25 bar	
Accuracy class	1	
Scale interval for volume indication (decimal points)	0,01	L
Display digit 1"	0,01	Price
Meter Options	6x6x4	
Certificates	8x8x6	
Other certificates are available upon request	Volume flow meter - Mass flow meter	
	MID, ATEX, OIML, CE	

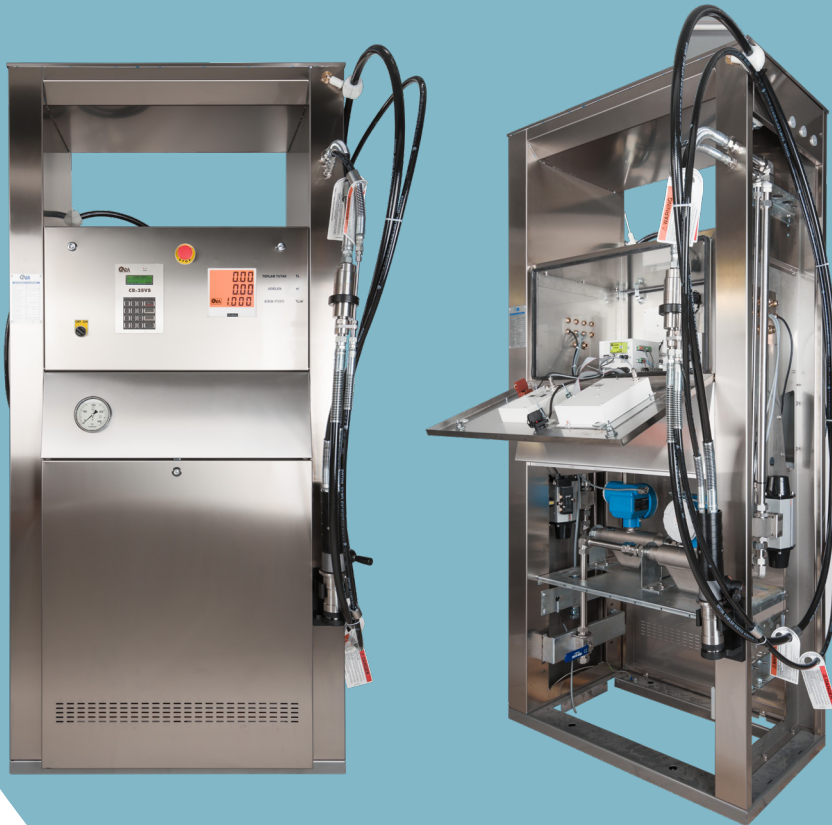
FUEL DISPENSER



Product Features

Nominal pipe diameter Inlet/Outlet (DN)	25 mm
Maximum flow rate (Qmax)	50 L/Min
Minimum flow rate (Qmin)	5 L/Min
Minimum measured quantity	2 L
Cyclic volume	0,5 L
Measured liquid	Diesel / Gasoline
Liquid density	700 to 850 kg/m ³
Temperature range of liquid	(-20 to 40)°C
Temperature range of ambient	(-40 to +65)°C
Pressure range of liquid	0,7 to 27 bar
Accuracy class	0,5
Scale interval for volume indication (decimal points)	0,01 L 0,01 Price
Display digit 1"	6x6x4 8x8x6
Meter Options	Volume flow meter
Certificates	MID, ATEX, OIML, CE
Other certificates are available upon request	

CNG DISPENSER



Product Features

Flow range	1 to 77 kg/min (68 to 7550 nm ³ /hr)
Pressure limit	375 bar
Working pressure	250 bar
Meter accuracy	±%0,2
Temperature limits	-25/+50
Display digit 1"	6x6x4 8x8x6
Certificates	MID, ATEX, OIML, CE
Other certificates are available upon request	

LNG DISPENSER



Product Features

Size	230 x 155 x 75 cm
Maximum flow rate	15 kg/min
Minimum flow rate	90 kg/min
Accuracy	<1,5%
Minimum pressure	3 bar
Maximum pressure	22 bar
Minimum operating temperature	-162 °C
Maximum operating temperature	-104 °C
Temperature range of ambient	-10 - +40 °C (optional – 25 - + 40°C)
Certificates	ATEX, CE

H₂ DISPENSER



Product Features

Filling Pressure	350 Bar / 700 Bar
Temperature Range of Ambient	-40~+55 ° C
Working Power	220V ± 15%, 50Hz±1Hz;
Hydrogen Filling Machine Type	Double nozzle dual metering three line with pre-cooling hydrogen filling machine
Hydrogen Filling Nozzle	Double nozzle TK16/TK25
Hydrogen Filling Flow Rate	Not less than 3kg/min
Complies with Society of Automotive Engineers (SAE) Standards SAE-TIR-J-2600, SAE-TIR-J-2601, SAE-TIR-J-2719, and SAE-TIR-J-2799	
Complete fill accuracy of 98% with communications	
Credit card payment option with store point-of-sale (POS) interface	
Dispenses hydrogen in 3-5 minutes and temperature control of hydrogen gas to -40°C	
Nominal fill quantity of 1-10 kg per fill for light/heavy duty vehicles	

LPG MASTER METER

Mechanical
Meter



Coriolis
Meter



Product Features

Dimensions	43x45x75 cm
Net weight	39 kg
Nozzle	All Type Nozzles
Meter	LPG Meter Prima / LPG Massflow Meter
Electronic Head	One single electronic head
Sensibility	%0,2
Automatic error rate adjustment	
Can observed, reported and printed the density, pressure, temperature and all parameters on meter	
Automatic preset	
Solenoid valve controlled	

LPG HYDRAULIC GROUP



Product Features

Nominal pipe diameter	25 mm
Inlet/Outlet (DN)	
Maximum flow rate (Qmax)	50 (both types) L/Min
Minimum flow rate (Qmin)	5 L/Min
Minimum measured quantity	5 L
Cyclic volume	0,5 L
Measured liquid	LPG
Liquid density	500 to 650 kg/m ³
Temperature range of liquid	(-10 to 50)°C
Pressure range of liquid	7 to 25 bar
Accuracy class	1
Mechanical class	M1
Temperature range of ambient	(-25 to +55)°C

Thanks to EC type approval it can be implemented in all dispenser which has MID certificate.

COMBO HYDRAULIC GROUP

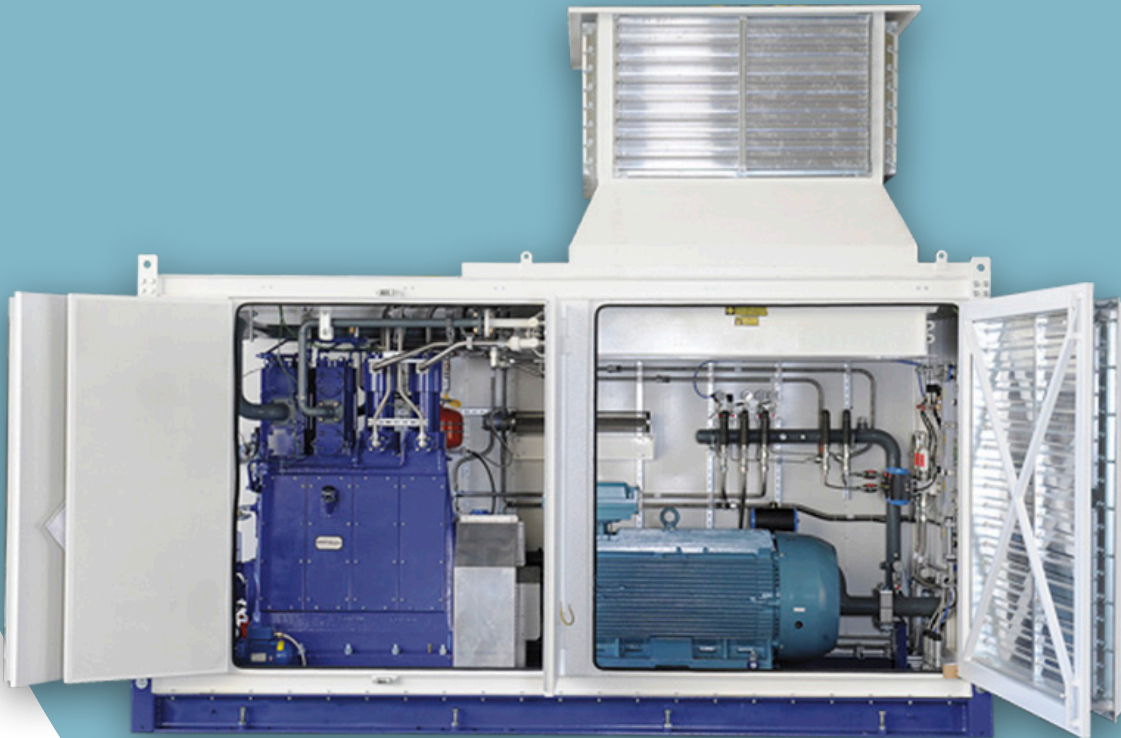


Product Features

Nominal pipe diameter Inlet/ Outlet (DN)	25 mm
Maximum flow rate (Qmax)	50 (both types) L/Min
Minimum flow rate (Qmin)	5 L/Min
Minimum measured quantity	5 L
Cyclic volume	0,5 L
Measured liquid	LPG and Diesel / Gasoline
Liquid density	500 to 650 kg/m ³
Temperature range of liquid	(-10 to 50)°C
Pressure range of liquid	7 to 25 bar
Accuracy class	0,5
Mechanical class	M2
Temperature range of ambient	(-25 to +55)°C

Thanks to EC type approval it can be implemented in all dispenser which has MID certificate.

CNG COMPRESSORS



Product Features

A Series

Power	37-110 kw
Inlet Pressure	0,5-100 bar
Capacity	100-1900 Sm ³ /h

2B Series

Power	Up to 250 kw
Inlet Pressure	0,5-100 bar
Capacity	300-4000 Sm ³ /h

Hydraulic

Power	15-55 kw
Inlet Pressure	30-250 bar
Capacity	85-3000 Sm ³ /h

1B Series

Power	Up to 110 kw
Inlet Pressure	20-200 bar
Capacity	545-3750 Sm ³ /h

4B Series

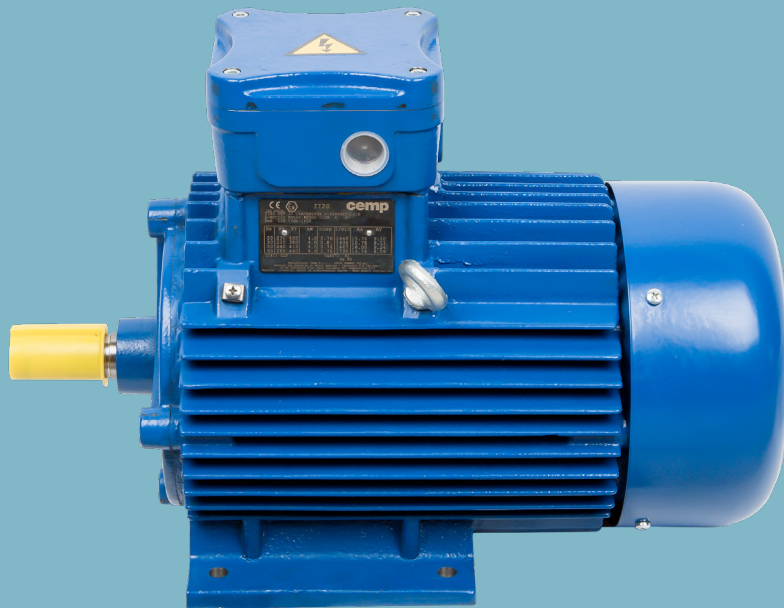
Power	200-600 kw
Inlet Pressure	1-100 bar
Capacity	600-9800 Sm ³ /h

W Series

Power	55-200 kw
Inlet Pressure	0,5-70 bar
Capacity	200-3650 Sm ³ /h



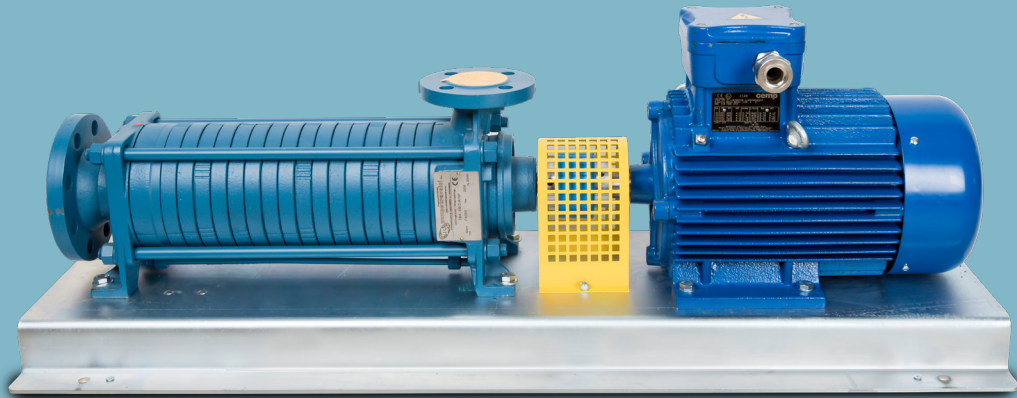
EXPROOF MOTORS



Product Features

Voltage	230 / 400 / 440 V
Frequency	50 / 60 Hz
Rated power	0,18 - 400 kW
Mounting type	All mountings
Type of protection	II2GD Ex-db IIB/IIC
Temperature class	T3 - T6 Gb
IP	IP55 - IP65
Max. Ambient temp.	+40 °C
Cooling type	IC411
Efficiency	IE3 / IE4
Insulation class	CL.FB, ect.
Temperature rise	Compliant to class

LPG PUMPS (6 - 8 Stages)



Product Features

3000 Series

	6 Stage	8 Stage
Inlet	2 1/2"	2 1/2"
Outlet	1 1/4"	1 1/4"
Pump Capacity	90-100 lt/min	100-120 lt/min
Pump Capacity	5,4-6 m ³ /h	6-7,2 m ³ /h
Exproof motor power	4 kw	4 kw

5000 Series

	6 Stage	8 Stage
Inlet	4"	4"
Outlet	2"	2"
Pump Capacity	400 lt/min	450 lt/min
Pump Capacity	24 m ³ /h	27 m ³ /h
Exproof motor power	18,5 kw	22 kw

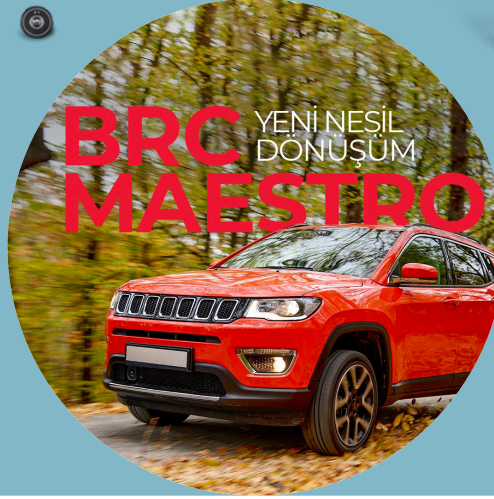
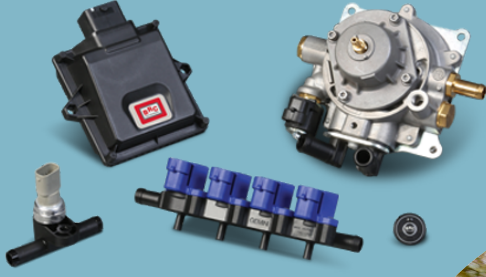
4000 Series

	6 Stage	8 Stage
Inlet	3"	3"
Outlet	1 1/4"	1 1/4"
Pump Capacity	220 lt/min	230 lt/min
Pump Capacity	13,2 m ³ /h	13,8 m ³ /h
Exproof motor power	5,5 kw	7,5 kw

6000 Series

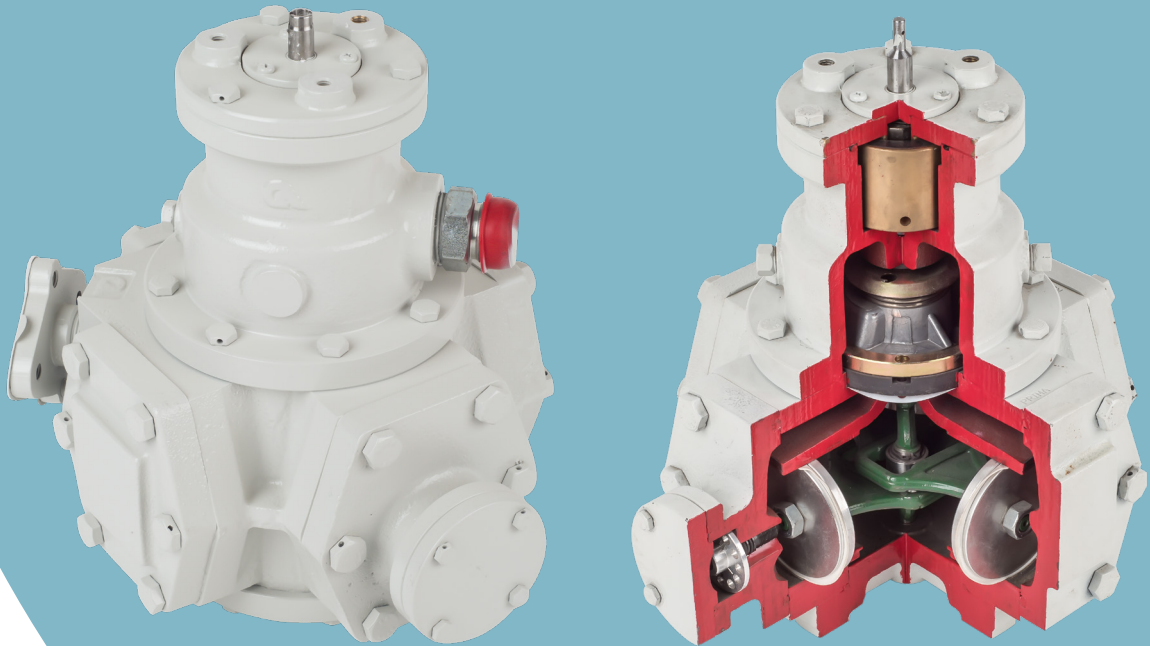
	6 Stage	8 Stage
Inlet	4"	4"
Outlet	2 1/2"	2 1/2"
Pump Capacity	750 lt/min	800 lt/min
Pump Capacity	45 m ³ /h	48 m ³ /h
Exproof motor power	30 kw	37 kw

BRC KITS



	Sequent Comfort	Sequent Platinum	BRC Maestro
Cylinders	3-4	3-4-5-6-8	3-4-5-6-8-12
LPG ECU connector	FCI 32 Pin	FCI 32 Pin	FCI 112 Pin
Gas ECU body material	Aluminium-Plastic	Aluminium-Plastic	Aluminium-Plastic
Gas shut-off solenoid valve	2	2	2
Reducer Coolant inlet outlet elbows	Plastic	Plastic	Plastic
Internal petrol injectors emulation	{√}	{√}	{√}
	Resistive	Resistive	Resistive
Gas pressure input integrated on rail	X	{√}	{√}
Gas temp. input integrated on rail	X	{√}	{√}
Water temperature sensor on reducer	{√}	{√}	{√}
N lambda oxygen input	1	1	2
RPM signal	{√}	{√}	{√}
MAP sensor	LPG/Only calibration CNG/Included	LPG/Only calibration CNG/Included	Included
Communication with OBD (K and CAN)	X	{√}	2X CAN, UART, LIN
Sequential fuel switch over	{√}	{√}	{√}
Injectors type	Gemini	IN03 MY09	IN03 MY09
Gas level indicator	Switch	Switch	Switch

LPG METER



Product Features

Pistons	4
Measurement Accuracy	$\pm 0.5\%$
Cycle Volume	0,5 Liter
Magnetic Coupling	14000 Gaus
Body	GGG40 cast iron

Self cleaning and self washing system.

Cold stamped shaft and crank.

1.5 million liters warranty.

Thanks to EC type approval it can be used in all dispenser which has MID certificate.

OIML R117 Certified

LPG NOZZLES



Product Features

Size	19,9x23,1x6 (cm)
Connection Dimensions	1" BSPP End
Temperature	-45+55 °C
Working Pressure	25 bar
Test Pressure	37,5 bar
Sealing	Polymer and Elastomer O-ring
Components	MS58 Brass Metal, 6013 Al, Chrome, Nickel
Product Weight	1650 gr
Usage	LPG systems

LPG FILTERS



Product Features

Size	(1) 13,2x5,6 (cm) (2) 12,7x6,5 (cm) (3) 11x6,2 (cm)
Temperature	-45+55 °C
Working Pressure	25 bar
Test Pressure	37,5 bar
Sealing	Polymer and Elastomer O-ring
Filter Paper	5 micron microglass filter
Product Weight	(1) 190, (2) 310, (3) 280 (gr)
Usage	LPG/Fuel Dispensers
Customized request filters	

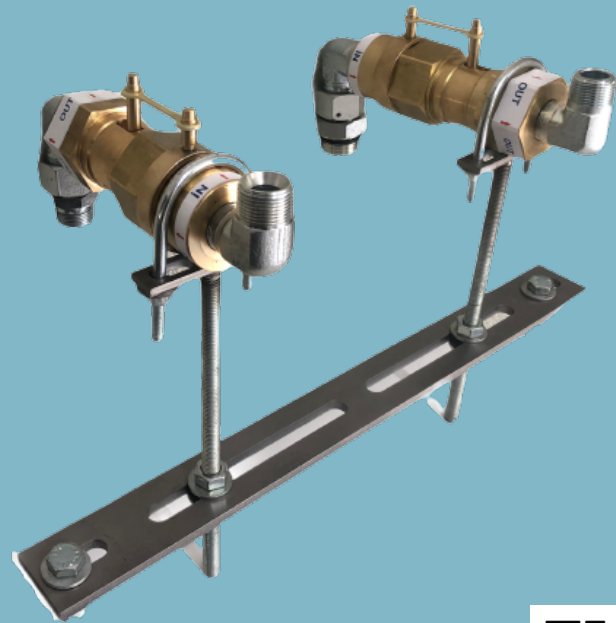
LPG BREAKAWAY



Product Features

Size	11,55x6,6 (cm) - 25cm Wire
Connection Dimensions	¾" NPT
Temperature	-45+55 °C
Detached Strength	180-200 Newton
Working Pressure	25 bar
Test Pressure	37,5 bar
Sealing	Polymer and Elastomer O-ring
Components	MS58 Brass Metal, 6013 Al, SS316 Stainless
Product Weight	1375 gr
Usage	LPG systems

LPG SHUT - OFF VALVE



Product Features

Size	15x7,7 (cm)
Connection Dimensions	¾" NPT
Temperature	-45+55 °C
Break Off Temp.	120 °C
Working Pressure	25 bar
Test Pressure	37,5 bar
Sealing	Polymer and Elastomer O-ring
Components	MS58 Brass Metal, Steel Spring, 6013 Al
Product Weight	1900 gr
Usage	LPG systems

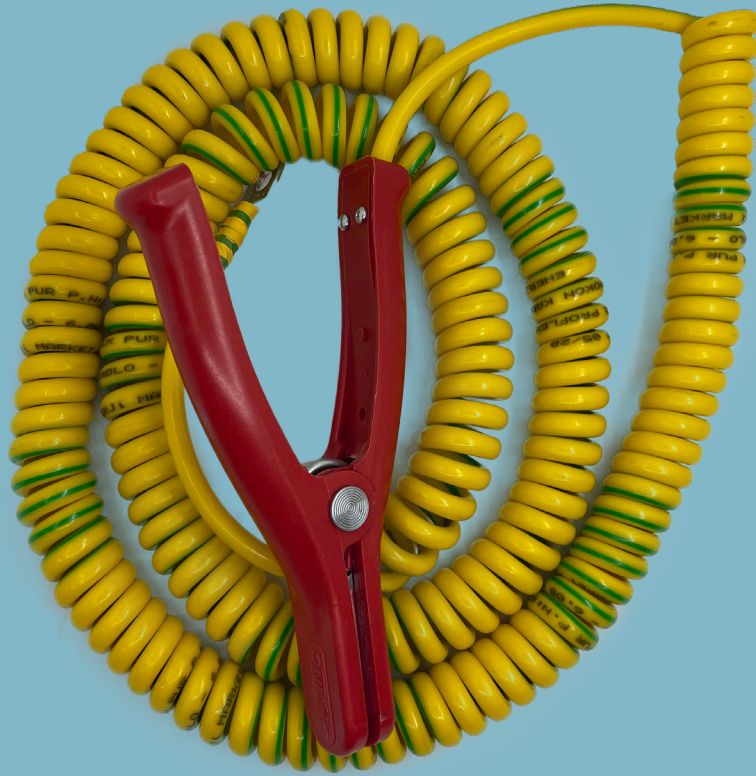
HOSE GUIDE



Product Features

Size	16,5x16,5x25 (cm)
Connection Dimensions	M10 Dowels
Temperature	-45+55 °C
Components	Otomat, St37 Steel, PPRC
Product Weight	3790 gr
Usage	LPG Dispensers

SPIRAL GROUNDING WIRE



Product Features

Size	(1) 16,5x16,5x25 (cm)
Connection Dimensions	7 (mm)
Temperature	-45+55 °C
Transmitter	Annealed Class 5 Copper - 6 mm ²
Current Draw	150 Amper
Wire Diameter	7 (mm)
Spiral Diameter	24 (mm)
Wire Length	10 mt
Spiral Length	120 (cm)
Components	Polvurethane (PUR), Copper, PVC
Product Weight	700 gr
Usage	Grounding Systems

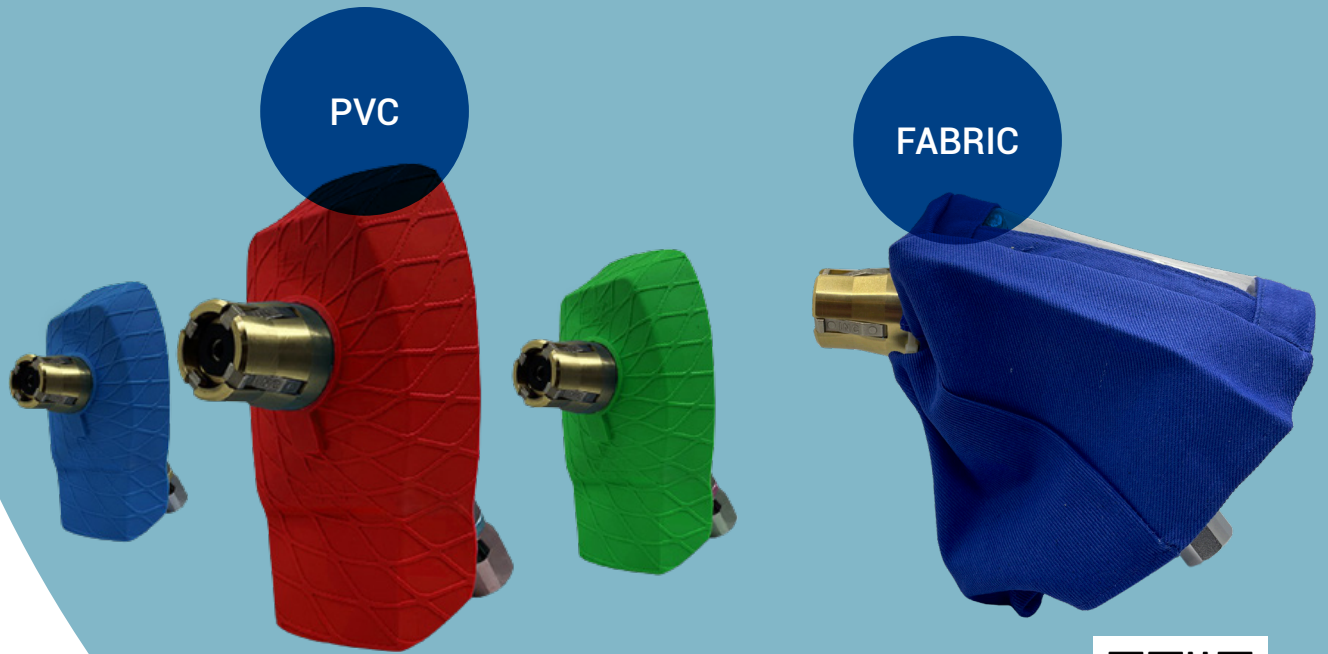
GROUNDING CLAMP



Product Features

Size	10,8x17 (cm)
Connection Dimensions	8 (mm)
Temperature	-45+55 °C
Current Draw	150 Amper
Components	%100 ABS, Nickelic copper, Spring
Product Weight	130 gr
Usage	Grounding Systems

LPG NOZZLE COVER



Product Features

PVC

Size	18x15 (cm)
Temperature	-45 + 55 °C
Components	Special Polyvinyl Chloride Resin
Special Feature	Antistatic
Product Weight	120 gr
Usage	LPG Nozzles

FABRIC

Size	19x16 (cm)
Temperature	-45 + 55 °C
Components	Special Fabric, Transparent PVC
Special Feature	-
Product Weight	60 gr
Usage	LPG Nozzles

KNEE PAD



Product Features

Size	18x22 (cm)
Connection	Velcro Clamp, With Buckle
Components	PVC, Fabric
Product Weight	240 gr

PROTECTION BARRIER



Product Features

Bottom Plate	280x280x15 (cm)
Pipe	750Lx139x4 (mm) 5"
Cap	SCH20, 139x3 (mm)
Triangle Support	60x60x15 (mm)
Rope	Q16mm Steel Rope
Connection	M18x15 mm Rod + Epoxy
Total Weight	20 kg
Dye	Primer + Static Acrylic Wet Paint
Color	White, Red and others
Materials	Welded Pipe
Typers	Welded (with steel rope), Weldless

2A Mühendislik Sanayi ve Ticaret A.Ş.
Kağıthane Cad. No: 2 Kağıthane - İstanbul / TURKEY
T. +90 212 321 52 52 - F. +90 212 321 88 21
www.2a.com.tr
<https://2amuhendislik.trustpass.alibaba.com>

